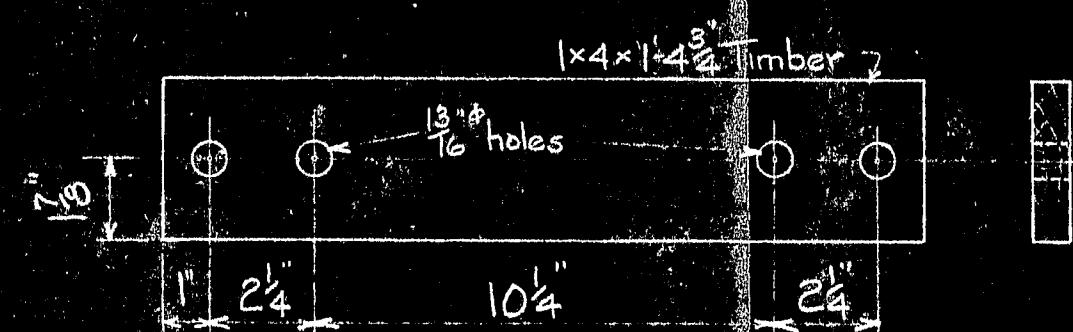
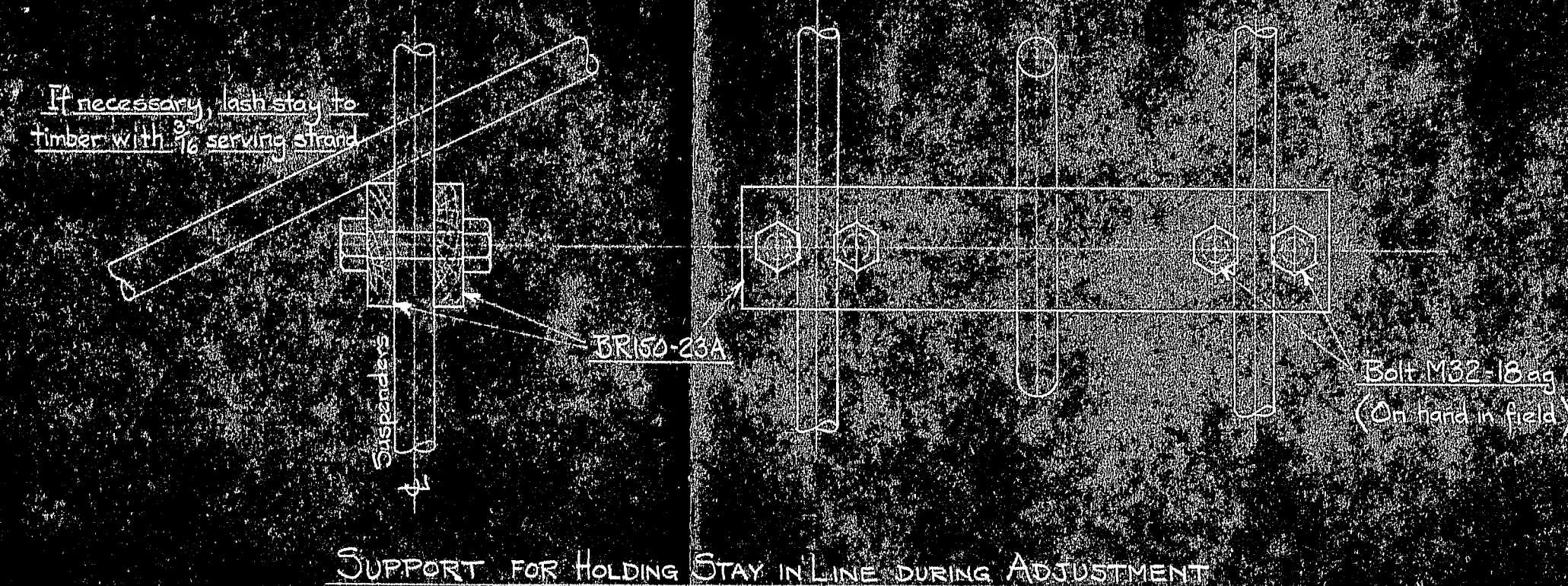


METHOD OF HOLDING SOCKETS IN LINE DURING ADJUSTMENT



BR150-23A-TIMBER



SUPPORT FOR HOLDING STAY IN LINE DURING ADJUSTMENT

BR150-23A	1400ft			3/16 Serving Strand	
BR150-23A	350	Wood		Timber	

MARK	REQ'D	MAT'L	REQ. NO.	NAME	REMARKS
BILL OF MATERIAL					
JOHN A. ROEBLING'S SONS CO., TRENTON, N. J.					
DEER ISLE BRIDGE REINFORCEMENT					
METHOD FOR HOLDING STAYS IN LINE DURING ADJUSTMENT					
BY	REVISIONS	DATE			
APPROVED			SCALE 3"=1'-0"	SERIAL	SHEET
CH. DR.			DES. DR. 4-11-44	BR150	23
ENG'R			CH.		

DWG. NO.	TITLE
	REFERENCE DRAWINGS

